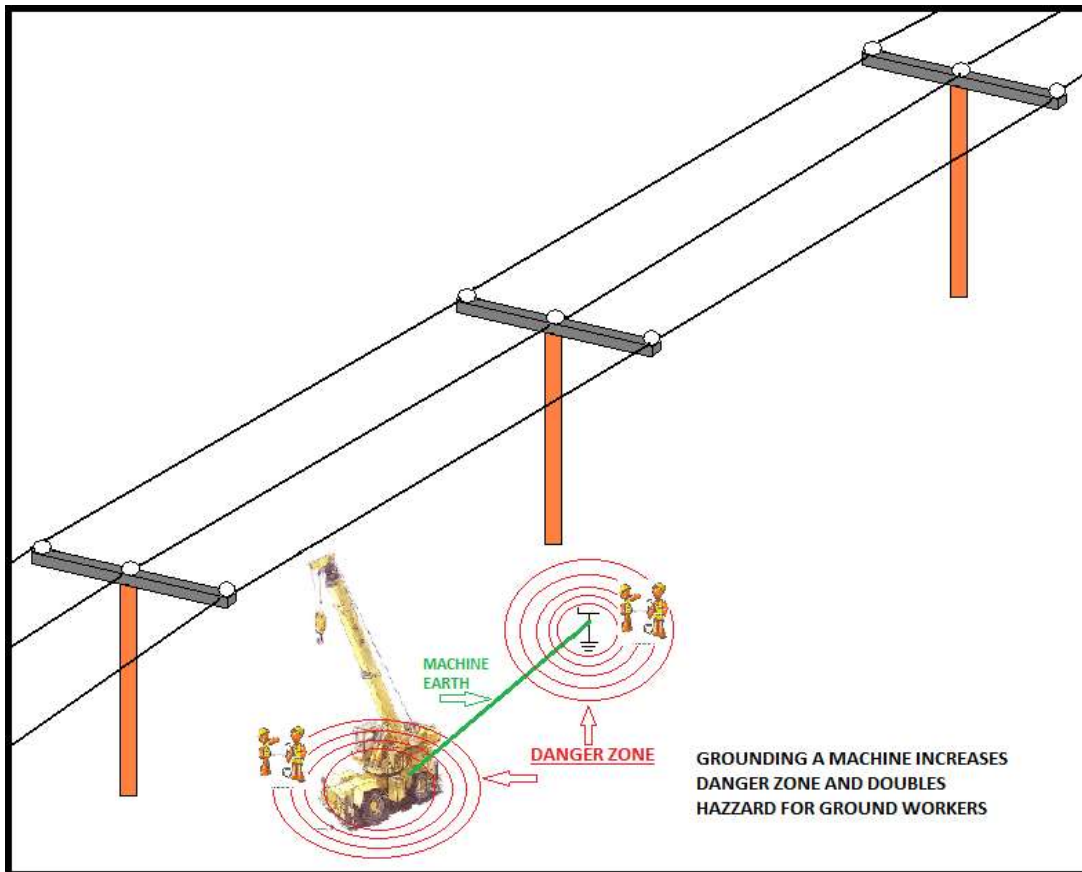


## MYTHS AND ILLUSIONS NO. 5

### DOES EARTHING A MACHINE MAKE THE WORKSITE SAFE FOR WORKERS?

#### A Specified Safety Procedure



Numerous tests prove that earthing a machine does not make the worksite safe for ground workers or machine operators from the effects of Ground Rise Potential.

On the contrary, earthing a machine will double the danger zone created by GRP for ground workers in the event of accidental contact with a live power line.

**Electrocution has occurred while working in the vicinity of a machine that accidentally touched a live power line.**

Can you explain how attaching an earthing conductor to a machine, as in the example above, makes the worksite safe? If you can do so scientifically, then you've earned €10,000 for yourself or your nominated charity.

Offer ends 4<sup>TH</sup> July 2018 [Terms and conditions](#)

Video: <http://tynaghnetworks.ie/cms/facts-myths-video-results-5/>